

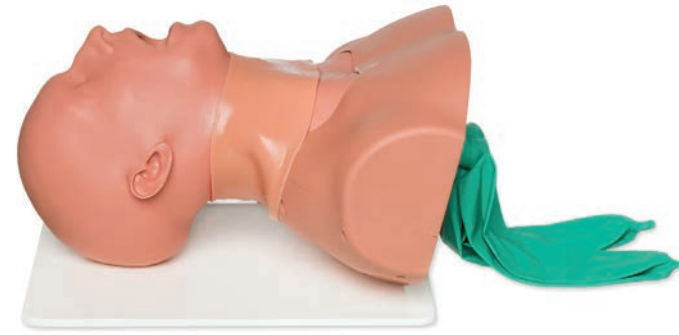
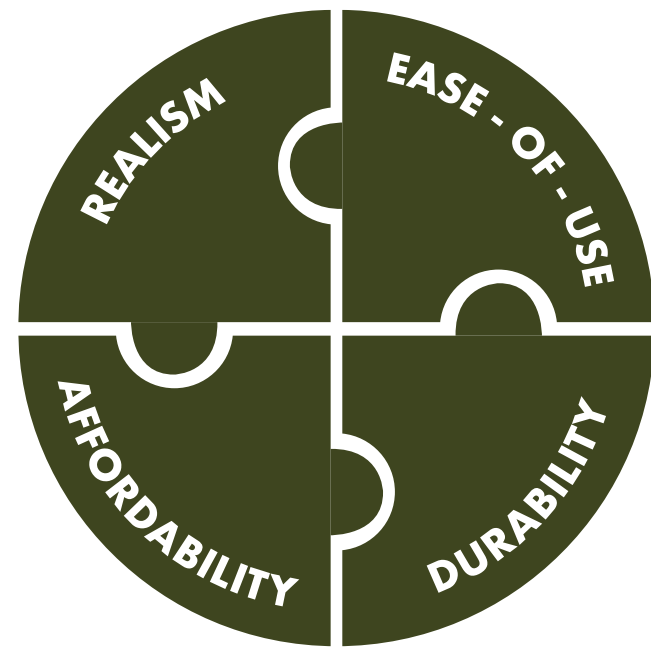


2020

PRODUCT CATALOG



IN ALL OF OUR PRODUCTS WE STRIVE TO ACHIEVE THE PERFECT BALANCE OF



TREAT CUSTOMERS AS PARTNERS

- **Customer Centric Culture**
- **Foster deep relationships**
- **Listen to our partner's needs**

Over the years, our customers have asked us to build an airway management trainer that incorporates our industry-leading knowledge of realistic soft tissue. We listened carefully to each request and partnered with our customers to define all the features that would be beneficial. AirwayMan is a result of deep listening and our relationships with the customer. The AirwayMan is a high fidelity, durable and allows users to quickly change out components to present different airway complications for advanced training through the airway management algorithm. We have three variations of the soft airway built, but we are listening to requests, and additional variations are on their way. What will we build next? We are listening.



PASSIONATE PRODUCT INNOVATORS

- **Champion an innovative culture**
- **Encourage free thinking**
- **Never accept status-quo**

Simulab worked on an industry-wide challenge to create an arterial line/ABG trainer that was ultrasoundable and could manage multiple needle sticks while not subjecting the user to excessive spray. For five years, our engineering group iterated and tested ideas to arrive at the perfect solution. Our trainer is highly realistic, easy to use, and has a very low per stick cost. We built the simulator to put the controls of patient variables in the instructor's hands to allow for on-the-fly training. From the ultrasound image, arterial pressure, palpable pulse, and the easy set-up, we considered every person who learns on, teaches with, and sets up the product. We are paying attention.



CONTINUE TO PROVE OUR COMMITMENT

- **Maintenance plans that eliminate product obsolescence**
- **Simplify buying consumables**

At Simulab, we are always thinking about the entire lifecycle of simulator ownership. The TraumaMan v5 upgrade was a testament to that commitment. The widely used CentralineMan is on its fifth generation of tissue, increasing realism with each version, but remaining compatible with the original body form. Additionally, we have created unique and customizable buying programs that make receiving last-minute consumables as easy as sending an email. We are here for you.

The Simulab Difference



Table of Contents

EMERGENCY RESPONSE | TRAUMA

- 6 TraumaMan®
- 8 AirwayMan®
- 10 PacerMan®
- 12 SonoSkin®
- 13 Bleeding Control Leg Trainer
- 14 Intraosseous (IO) Insertion Pad
Venous Cutdown

VASCULAR ACCESS | REGIONAL ANESTHESIA

- 16 CentralLineMan®
- 18 ArterialLine & ABG Trainer
- 20 PICCLineMan™
- 22 FemoralLineMan™
- 23 Lumbar Epidural Trainer
- 24 Regional Anesthesia Trainer
- 25 Regional Anesthesia Femoral Trainer
- 26 Venipuncture Pads

PEDIATRICS

- 28 TraumaChild®
- 30 VascularAccessChild™
- 32 LumbarPunctureBaby™

BASIC TO ADVANCED SURGICAL TRAINERS

- 34 Surgical Abdomen Training System
- 36 Laparoscopic Trainers
- 37 Laparotomy Trainer
- 38 Basic Open Surgical Skills (BOSS) Trainer
- 39 Suturing Tissues
- 40 LapTrainer with SimuVision®
- 41 Laparoscopic Skill Set Modules
- 42 Perineal Repair Trainer

CRITICAL CARE

- 44 Lumbar Puncture Trainer
- 45 Paracentesis Trainer
- 46 Thoracentesis Trainer
- 47 Arthrocentesis Trainer

SIMUGEAR

- 48 Instrument Kits
Guide Wires
- 49 Fluids
IV Poles and Bags
Hand Pump (Red Bulb)
Venous Pressure Regulator
Skin Conditioning Powder
- 50 Batteries
Trays

**NEW AIRWAYMAN DIFFICULT SOFT
AIRWAY OPTIONS AVAILABLE.**

SEE PAGE 8

NEW



TraumaMan® System

ADVANCED EMERGENCY LIFE SUPPORT

TraumaMan® is the most widely used surgical trainer in the world. Over 400,000 clinicians in 45 countries have completed advanced surgical training using TraumaMan over the product's rich history. Evaluated and approved for use in Advanced Trauma Life Support (ATLS®) since 2001, TraumaMan remains the current choice for training worldwide and meets the requirements for the ATLS 10th Edition.

Year after year, through collaboration with medical educators, TraumaMan continues to evolve with upgrades, technology, and new procedural modules.

PRODUCT HIGHLIGHTS

- » Become immersed in procedural realism from the first incision with TraumaMan's bleeding, multilayered tissues, breathing responses and palpable anatomically correct landmarks
- » Quiet new internal ventilator, designed to power procedurally relevant air responses
- » Mobile neck module seamlessly moves between skill stations for surgical airway management
- » Versatile system with multiple add-on extensions: Articulating Head, Surgical Abdomen and FAST exam
- » Tissue and System variations with pricing programs available to support your unique educational needs

SKILLS

- » Surgical cricothyroidotomy and tracheostomy training
- » Bilateral thoracostomy chest tube placement allows for true-to-life pleural resistance and tissues that are now easier to replace between students
- » Learners can recognize correct positioning, perform surgical incision, blunt dissection through the chest wall, perforation of pleura and finger sweep, along with the ability to suture and secure chest tube during Chest Tube Insertion
- » Management of pleural effusion
- » New mechanically pressurized bilateral needle decompression for tension pneumothorax at 2nd, 4th, and 5th intercostal spaces
- » Perform pericardiocentesis to detect and aspirate pericardial effusion or cardiac tamponade
- » Incise through layers of skin, fat, fascia, abdominal muscle and peritoneum to evaluate an intraperitoneal hemorrhage with DPL training module
- » Optional Diagnostic Peritoneal Lavage and FAST Exam




MOBILE SIMUCRIC SURGICAL AIRWAY TRAINER




QUIET INTEGRATED VENTILATOR

BATTERY POWERED FOR TETHERLESS TRAINING

 TraumaMan System
PART #: TM-5138

Training Packages

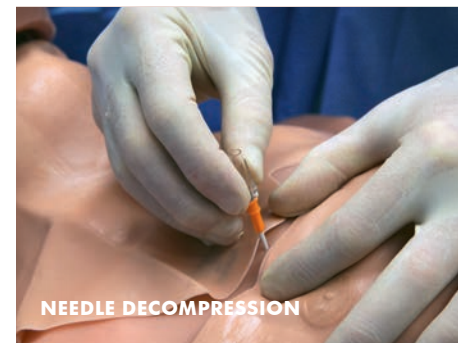
 TraumaMan is a flexible platform with many training packages to suit your needs. Contact Simulab or visit our website to learn more.



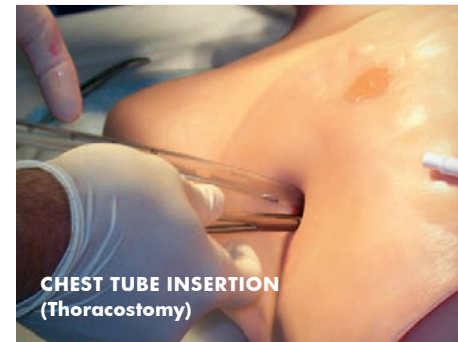
CRICOTHYROIDOTOMY



TRACHEOSTOMY



NEEDLE DECOMPRESSION



CHEST TUBE INSERTION
(Thoracostomy)



PERICARDIOCENTESIS



DIAGNOSTIC
PERITONEAL LAVAGE

AirwayMan®

COMPLETE AIRWAY MANAGEMENT

Meet **AirwayMan®**, he's going to change the way you think about and use airway trainers. Simulab has combined their expertise in soft tissue technology, their focus on durable yet replaceable components, along with ease of use and cost-effective solutions to revolutionize this market. Every part of AirwayMan is carefully engineered to recreate the familiar movements, textures and delicate nuances of human anatomy. AirwayMan includes the same cricothyroid structures found in TraumaMan—the most widely used cricothyroidotomy trainer in the world.

PRODUCT HIGHLIGHTS

VERSATILITY

- » Low cost replaceable soft airway options
- » Easy set up with soft tissue replacement system
- » Integrated cricothyroidotomy
- » Multi-layered, wrap-around replaceable neck skin with unsurpassed realism
- » Difficult soft airway options for advanced training include swollen tongue and blocked airway
- » Optional clicking teeth to simulate breakage when excessive force is used during oral intubation

FEATURES

- » Movement, weight, and landmarks closely mimic human anatomy
- » Soft palate anatomy allows visual identification during intubation
- » Palpable landmarks and life-like tissue to incise
- » Visible confirmation when successful intubation is achieved

SKILLS

- » Learn complete airway management from nasal and oral intubation—to needle and surgical cricothyroidotomy
- » Visually confirm key landmarks: functioning epiglottis, vallecula and vocal cords
- » Practice patient positioning and access strength needed for each procedure.
- » Practice proper technique for laryngoscope insertion and confirm intubation with auscultation and simulated chest excursion
- » Detect intubation errors including Right Mainstem Intubation



AirwayMan
PART #: AM-1311

NEW

AirwayMan® Replaceable Difficult Soft Airway Options

DIFFICULT AIRWAY I / SWOLLEN TONGUE

The Difficult Airway I patient simulates an acute presentation of tongue swelling, leading to upper airway obstruction that requires prompt recognition and treatment.

PART #: AM-SA-D1

DIFFICULT AIRWAY II / BLOCKED

The Difficult Airway II Patient simulates a severe presentation of tongue swelling as well as laryngeal edema leading to a blocked airway.

PART #: AM-SA-D2

REPLACEABLE SOFT AIRWAY OPTIONS PROVIDE A PATHWAY FOR TRAINING CLINICALLY CHALLENGING AIRWAY MANAGEMENT SKILLS



DIFFICULT SOFT AIRWAY I
SWOLLEN TONGUE



DIFFICULT SOFT AIRWAY II
SWOLLEN TONGUE WITH LARYNGEAL EDEMA



PacerMan® System

EMERGENT TRANSVENOUS CARDIAC PACING



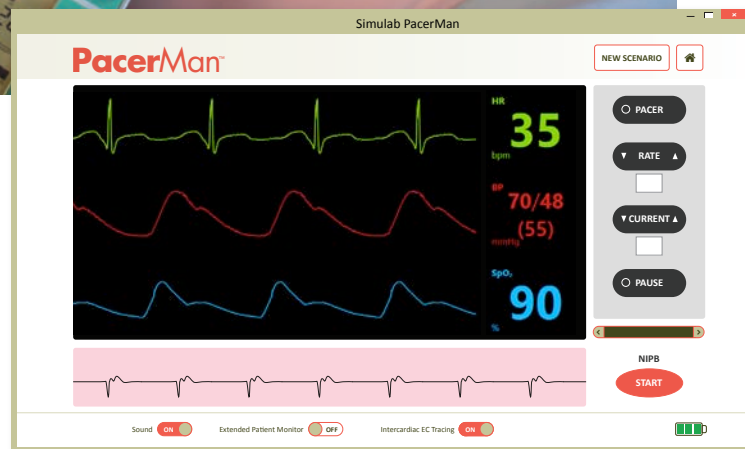
Meet **PacerMan®** and get ready for training high-risk emergent transvenous pacing —from initial diagnosis to capture. Simulab’s patented, SimuSensor® technology, powers a high-fidelity simulator with ultrasound compatible soft tissues. The system communicates with a simulated patient monitor for real-time, immersive training

Take your students through multiple outcomes using a blind or ECG guided approach. They’ll assess waveforms and manipulate their own pacing generator while learning to respond to the system’s live physiological responses.

During scenario-based training, transport PacerMan from a pre-hospital setting to the emergency room without interrupting the flow of simulation and learning. PacerMan is entirely self-contained and battery powered for easy-to-use mobile simulation.

PacerMan System
PART #: PM-1033

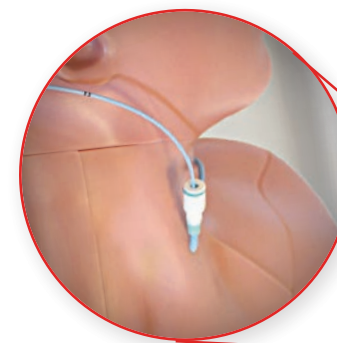
NOTE: PacerMan comes with SimuSensor software. An optional Laptop can also be purchased.



ASSESS REAL TIME CARDIAC MONITOR CHANGES

SKILLS

- » Learn to perform ultrasound-guided internal jugular insertion and full catheterization
- » Seamlessly works with your pacing generator and pacing kit for realistic training
- » Learn to manipulate the pacing generator to achieve successful capture
- » Presents rare complications with real-time pathways for resolutions
- » Assess real-time cardiac monitor changes

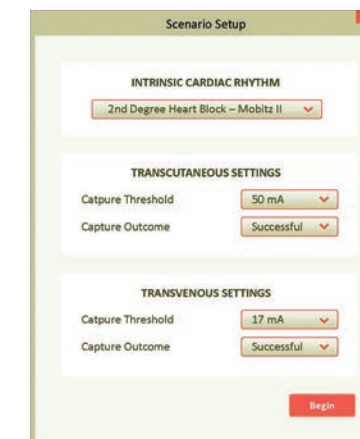
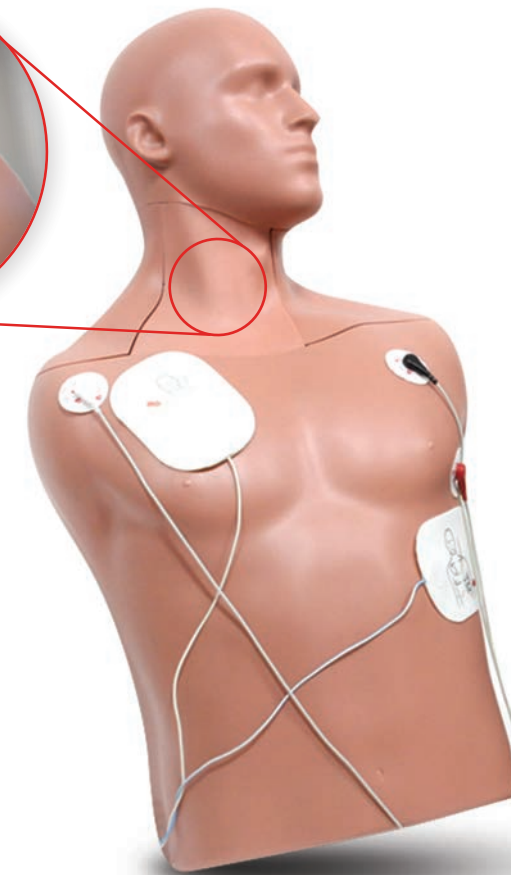


PERFORM ULTRASOUND GUIDED IJ INSERTION FOR FULL CATHETERIZATION

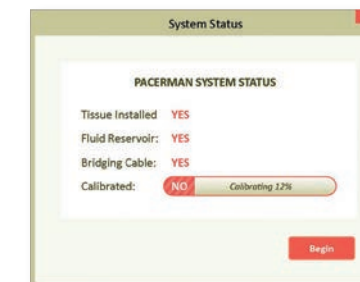
SEAMLESSLY WORKS WITH YOUR OWN PACING GENERATOR AND CATHETER KIT

LEARN TO MANIPULATE THE PACING GENERATOR TO ACHIEVE SUCCESSFUL CAPTURE

BATTERY POWERED FOR TETHERLESS TRAINING



PRESENTS RARE COMPLICATIONS WITH REAL-TIME PATHWAYS FOR RESOLUTION



SELF-PRIMING FLUID SYSTEM ALLOWS FOR TURN-KEY SETUP

PRODUCT HIGHLIGHTS

Includes a self-priming fluid system for easy setup and system management. Easy to use for scenario driven training with two procedural pathways for learners:

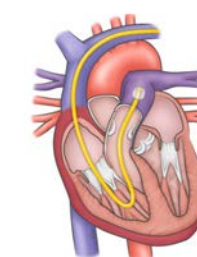
TRANSVENOUS PACING MODULE

- » Customize patient vitals to display: Heart Rate, Oxygen Saturation, Arterial Blood Pressure, and Non-Invasive Blood Pressure
- » Seamlessly works with any brand of pacing generator and catheter kit
- » Practice blind approach or identify pacing wire location with optional ECG tracing display
- » SimuSensor software responds directly to your pacing generator when you manipulate rate and output
- » Define outcomes such as wire movement into the Inferior Vena Cava, Pulmonary Artery or a coiled lead and allow for real-time clinical decision making
- » Choose from two defibrillator interface panels for simulated transcutaneous pacing

RIGHT HEART CATHETERIZATION MODULE

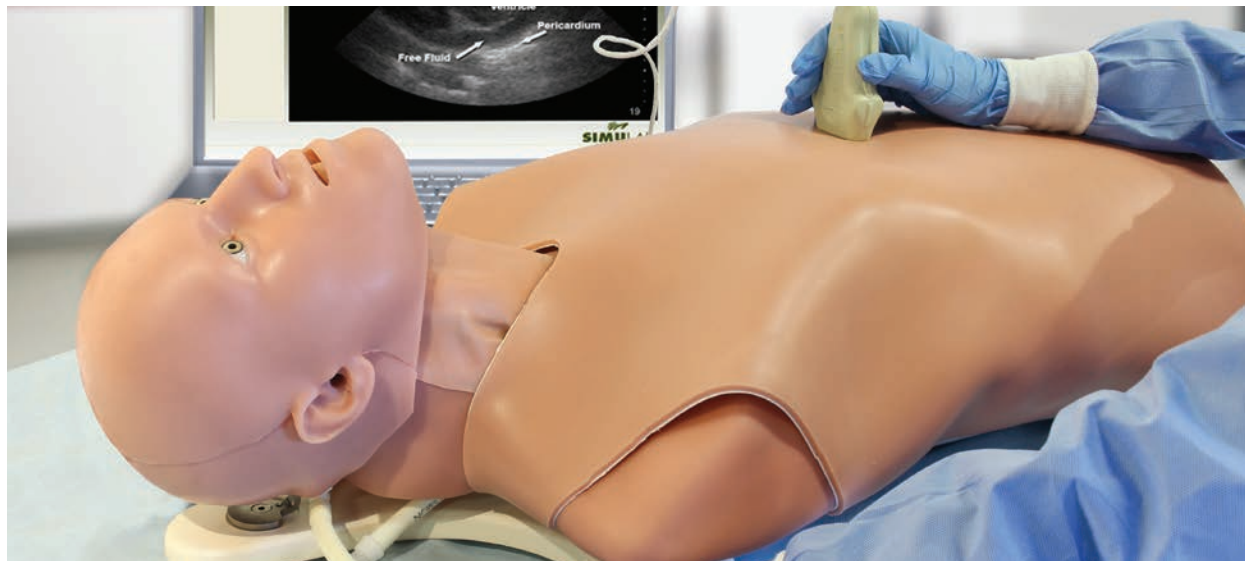
- » Diagnose conditions such as pulmonary hypertension and decompensated heart failure
- » Visualize anatomical placement of the catheter through real-time anatomical renderings
- » Measure pulmonary wedge pressures
- » Ultrasound-guided insertion and full catheterization at the Internal Jugular Vein
- » Pulmonary artery catheter insertion and inflation of the balloon in the vessels

Analyze pressure waveforms as the catheter moves through the channels.



SonoSkin®

ULTRASOUND DIAGNOSTIC WEARABLE FOR FAST & EFAST EXAM



SonoSkin® is a wearable training platform that provides diagnostic ultrasound imagery easily added to virtually any training scenario for FAST and eFAST exam learning. SonoSkin can be worn on a standardized patient, TraumaMan or your own patient simulator. With SonoSkin software, instructors can illustrate views during the FAST and eFAST exams. Our extensive pathology library includes images and videos from up to ten real patients. SonoSkin can be set to “mentor” mode, which includes visual instruction and space for unique notations or “student” mode, which randomly selects patient scenarios for hands-on learning.

PRODUCT HIGHLIGHTS

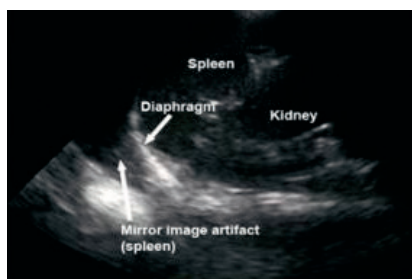
- » Software that allows any Windows based PC to simulate an ultrasound machine
- » Simulated ultrasound probe that plugs into a PC's USB port
- » Wearable skin with embedded targets for each of the viewing windows based on the computer module selected
- » Transverse and longitudinal viewing options
- » Rare pathology not commonly seen when training on real patients is available

SKILLS

- » Understand and diagnose disease states using real patient ultrasound images and videos
- » Gain a broad view of patient pathologies through reading and interpreting various normal and abnormal images and videos



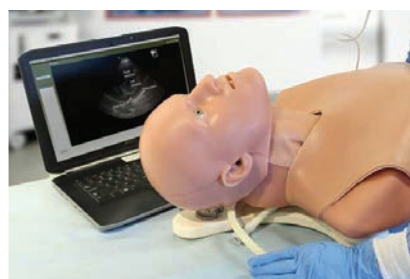
SonoSkin with FAST & eFAST Training Package
PART #: SSTP-20



ANY PC CAN SIMULATE AN ULTRASOUND MACHINE



BRINGS STANDARDIZED PATIENTS INTO THE SCENARIO



ACTUAL PATIENT IMAGES AND VIDEO

Bleeding Control Leg Trainer

PACKABLE WOUND TRAINER

Simulab's **Bleeding Control Leg Trainer** is a simple, cost-effective, easy to use packable wound trainer that offers simulated hemostatic wounds. The trainer presents a durable outer skin layer for repetitively executing critical patient treatment such as wound packing, compression and tourniquet application with any off the shelf device. Can be used anywhere, anytime for a variety of wound packing events.

PRODUCT HIGHLIGHTS

- » Realistic and durable leg anatomy and skin
- » Two different wound beds available: a laceration or stab wound and a large caliber gunshot wound (GSW) with both entrance and exit points
- » The GSW contains a bony landmark that allows instruction to “pack to the bone”
- » Realistic and durable skin for multiple student uses

SKILLS

- » Wound packing
- » Use of hemostatic gauzes
- » Compression
- » Tourniquet application



Bleeding Control Leg Training Package

(includes leg and 2 blood pools)

PART #: BCLTP-20

Bleeding Control Leg Trainer

PART #: BCLT-10

Simulated Blood Pool (2-Pack)

PART #: SBP-10

Intraosseous (IO) Insertion Pad

NEEDLE INSERTION TRAINING

The **Intraosseous (IO) Insertion Pad** provides an opportunity to repeatedly run-through critical IO insertion training techniques outside of emergency cases. Practice pushing the needle tip through the skin until it rests against the bone, and gently drill into the bone until the hub is close to the skin. This cost-effective pad is large enough for repeated use and includes soft tissue and cancellous bone.

PRODUCT HIGHLIGHTS

- » Cost-effective model includes soft tissue and cancellous bone
- » Large stable surface for repeated use
- » Realistic, tactile feedback
- » Choose from Pediatric, Adult or combination package

SKILLS

- » Learn to insert the needle at varying angles
- » Practice appropriate pressure application and drilling techniques



Intraosseous (IO) Insertion Pad
PART #: IOT-10
Intraosseous (IO) Pediatric Insertion Pad
PART #: IOTP-10
Intraosseous (IO) Training Package
PART #: IOTP-10

Venous Cutdown Ankle

SAPHENOUS VEIN CUTDOWN AND CANNULATION

When peripheral cannulation is difficult or impossible, practitioners turn to the greater saphenous vein in the ankle and leg. Simulab's simulated **Venous Cutdown** ankle allows users to practice surgically exposing the vein and cannulating the vessel under direct vision. The realistic, bleeding replaceable tissues allow for two students to learn through a first-cut experience.

PRODUCT HIGHLIGHTS

- » Ankle base with all relevant procedural landmarks
- » Multi-layered tissues with epidermis and subdermal layers for surgical cutdown

SKILLS

- » Palpate relevant landmarks to locate the saphenous vein
- » Surgical incision and tie-off of vein
- » Full cannulation under direct vision



PERFORM SURGICAL CUTDOWN AND CANNULATION



IV Ankle Cutdown
PART #: TM-IVB
IV Ankle Cutdown Tissue Pack (2 Student)
PART #: TM-IV



CentraLineMan®

MOST WIDELY USED CVC TRAINER WORLDWIDE

CentraLineMan® is the most widely used Central Venous Catheterization training solution on the market today. This flexible system offers unsurpassed value alongside clinically relevant anatomy, ultrasound-compatible tissues, and market-leading durability. When used with rigorous training, CentraLineMan is proven to reduce patient complications from central venous catheter insertion.

PRODUCT HIGHLIGHTS

- » Complete procedure at both the Internal Jugular, Supraclavicular and Subclavian vein sites
- » Anatomically correct
- » Ultrasound compatible
- » Replaceable tissue variations allow for progressive skill development on diverse patient populations
- » Self-sealing tissues provide the best value of any trainer on the market, in needle sticks and full catheterizations
- » Arterial/venous fluid provides immediate feedback and simulates complications
- » Portability allows learners to practice in settings of actual patient care



SKILLS

- » Full central venous catheterization using ultrasound guided or blind/landmark insertion approaches at the subclavian, supraclavicular, and internal jugular access sites
- » Place patient in the proper position per access site standards
- » Identify and select the appropriate access site based on patient anatomical variations
- » Palpate external landmarks to identify vessel location
- » Identify unsuccessful vessel access by fluid feedback representing arterial puncture

LANDMARKS & ANATOMY

Clinically relevant landmarks and anatomy that are palpable and visible under ultrasound including:

PALPABLE LANDMARKS

- » Upper torso and neck
- » Trachea
- » Sternocleidomastoid muscle
- » Lateral border of the first rib
- » Sternal/clavicular heads

ULTRASOUNDABLE

- » Internal Jugular Vein
- » Brachiocephalic Vein
- » Subclavian Vein
- » Clavicle
- » Sternal notch
- » Manubrium
- » Carotid Artery
- » Subclavian Artery



CentraLineMan®

COMPONENTS INCLUDE

- 1 CentraLineMan Body Form
- 1 Replaceable Tissue
- 1 Simulated Arterial/Venous Blood
- 1 Articulating Head (optional)

CentraLineMan System w/o Articulating Head

PART #: CLM-50

CentraLineMan System with Articulating Head

PART #: CLM-51



CentraLineMan® Replaceable Tissues

NORMAL TISSUE

Practice complete blind/landmark or ultrasound-guided central venous catheter insertion skills.

PART #: CLMT-50

OBESE TISSUE

Practice on patients with thicker tissue layers, minimal landmarks, and deeper vessels.

PART #: CLMOT-50

ADVANCED TISSUE

Practice the advanced skills necessary during emergent situations – inserting a line on a patient with an anatomical anomaly.

PART #: CLMAT-50

Non-Sterile Guidewires (25 Pack)

PART #: NSG-10



CLMT-50

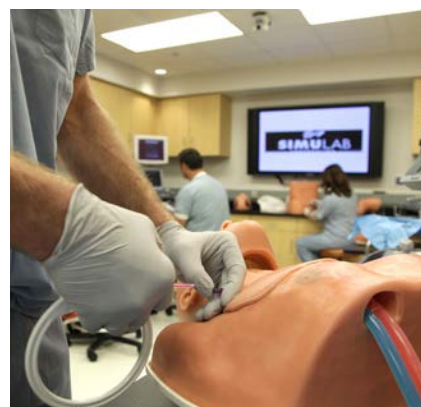
CLMOT-50

CLMAT-50



Training Packages

CentraLineMan is a flexible platform with many training packages to suit your needs. Contact Simulab or visit our website to learn more.



ULTRASOUND GUIDED WITH APPROPRIATE LANDMARKS



SELF-SEALING, DURABLE TISSUE FOR MULTIPLE CANNULATIONS



FULL CENTRAL VENOUS CATHETERIZATION

Ultrasound ArterialLine & ABG Trainer

RADIAL ARTERY CANNULATION AND ARTERIAL BLOOD GAS SAMPLING

Simulab's **Ultrasound ArterialLine and ABG Trainer** allows educators to train ultrasound guided radial artery catheterization and perform ABG sampling. This trainer brings medical simulation to new levels with variable pulse strength and rate, a two-part system consisting of a replaceable artery and tissue to provide crisp ultrasound imaging and durability for multiple uses before changing out either part. The system is self-priming, offers palpable landmarks, and arterial pressure that fills an ABG sampling syringe.

Easy
set-up

PRODUCT HIGHLIGHTS

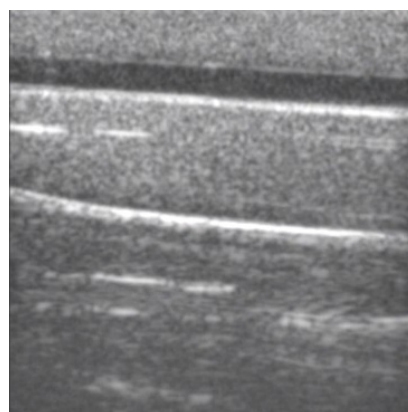
- » Artery is palpable at wrist and descends as it travels towards the elbow
- » Simulated radial artery that gives realistic resistance when punctured
- » Ultrasound compatible replaceable tissue technology with anatomical visualization
- » Positive fluid flow with lifelike flashback of simulated blood to provide feedback upon successful vessel access.
- » Easy set up and low cost per student vessel replacement
- » Self-priming artery with adjustable pulse rate and pulse strength
- » Realistic resistance of tissue and artery wall during injection
- » Distinct pop of the artery wall during insertion

SKILLS

- » Master ultrasound guided or blind palpation technique for vascular access of the radial artery
- » Practice placing needles and passing the guidewire while performing full catheterization
- » Learn to safely maintain an arterial line
- » Practice arterial blood gas sampling



FULL CATHETERIZATION WITH
ULTRASOUND GUIDANCE



LONGITUDINAL OR TRANSVERSE
ULTRASOUND VIEW



REALISTIC ULTRASOUND IMAGING OF
RADIAL ARTERY

Ultrasound ArterialLine & ABG Trainer

COMPONENTS INCLUDE

- 1 Ultrasound ArterialLine & ABG Trainer
- 1 Replaceable Tissue
- 1 10-Pack of Replaceable Arteries
- 1 Simulated Arterial Blood

Ultrasound ArterialLine & ABG Trainer
PART #: ALT-10

Ultrasound ArterialLine & ABG Trainer Replaceable Components

- Ultrasound ArterialLine Replaceable Tissue
PART #: ALTT-10
- ArterialLine Replaceable Arteries (10-Pack)
PART #: ALTA-10

SHARP ULTRASOUND IMAGING

VARIABLE PULSE STRENGTH
AND RATE

PALPABLE LANDMARKS

ARTERIAL PRESSURE THAT
FILLS AN ABG SAMPLING
SYRINGE

BATTERY POWERED FOR
TETHERLESS TRAINING

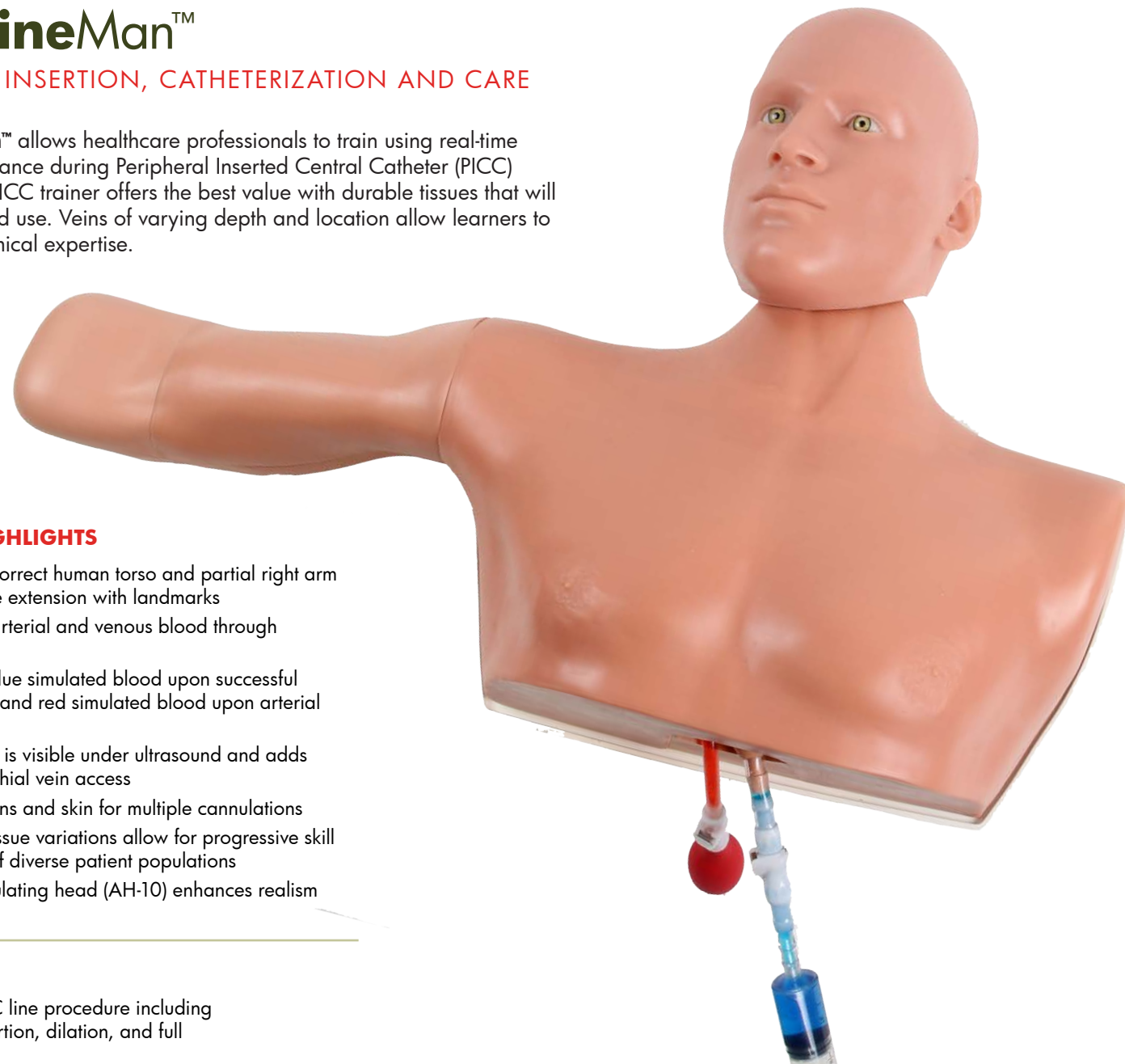
Training Packages

Contact Simulab to learn more about our ArterialLine Trainer packages and maintenance programs.

PICCLineMan™

PERIPHERAL INSERTION, CATHETERIZATION AND CARE

PICCLineMan™ allows healthcare professionals to train using real-time ultrasound guidance during Peripheral Inserted Central Catheter (PICC) insertion. This PICC trainer offers the best value with durable tissues that will endure repeated use. Veins of varying depth and location allow learners to develop anatomical expertise.



PRODUCT HIGHLIGHTS

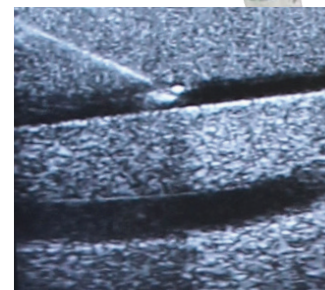
- » Anatomically correct human torso and partial right arm at a 90 degree extension with landmarks
- » Differentiates arterial and venous blood through pulsations
- » Flashback of blue simulated blood upon successful venous access and red simulated blood upon arterial access
- » Median Nerve is visible under ultrasound and adds realism in brachial vein access
- » Self-sealing veins and skin for multiple cannulations
- » Replaceable tissue variations allow for progressive skill development of diverse patient populations
- » Optional articulating head (AH-10) enhances realism

SKILLS

- » Complete PICC line procedure including guidewire insertion, dilation, and full cannulation
- » Peripherally Inserted Catheterization using Basilic, Brachial, or Cephalic Veins
- » Normal, Obese, and Geriatric tissue options allow assessing patient variance in vessel depth and sizing
- » Using ultrasound guidance during catheter placement
- » Palpable anatomic landmarks clinically relevant for measuring catheter length
- » Multiple X-Rays provided digitally to support student's pathway in predicting optimum SVC tip position



FULL CENTRAL VENOUS CATHETERIZATION



SHARP ULTRASOUND IMAGING

LANDMARKS & ANATOMY

ULTRASOUND ANATOMY

- » Basilic Vein
- » Brachial Vein
- » Cephalic Vein
- » Median Nerve
- » Brachial Artery
- » Humerus

PICCLineMan™

COMPONENTS INCLUDE

- 1 PICCLineMan Body Form
- 1 Replaceable Tissue
- 1 Simulated Arterial/Venous Blood
- 1 Pulse Bulb/Venous Pressure Regulator
- 1 Articulating Head (optional)

PICCLineMan System w/o Articulating Head
PART #: PLM-10

PICCLineMan System with Articulating Head
PART #: PLM-11

Training Packages

Contact Simulab or visit our website to learn more about our PICCLineMan package savings.

PICCLineMan™ Replaceable Tissues

NORMAL TISSUE

Practice isolation and needle insertion on all three access sites using ultrasound guidance

PART #: PLMT-10

OBESE TISSUE

Practice on patients with thicker tissue layers and deeper vessels.

PART #: PLMOT-10

GERIATRIC TISSUE

Practice on patients with aged skin and smaller, superficial vessels.

PART #: PLMGT-10

Non-Sterile Guidewires PICC Line (25 Pack)

PART #: NSG-20



PLMT-10

PLMOT-10

PLMGT-10



FemoraLineMan™


VENOUS AND ARTERIAL INSERTION AND FULL CATHETERIZATION




FemoraLineMan™ is an ultrasound compatible task trainer and effective training solution for central venous or arterial access using the femoral site. This trainer utilizes the same patented technology as the highly acclaimed CentralLineMan System and allows medical professionals to train with real-time ultrasound guidance during venous or arterial cannulation.

PRODUCT HIGHLIGHTS

- » Anatomically correct pelvis with identifiable landmarks, including anterior superior iliac spine, pubic tubercle, and inguinal ligament
- » Self-sealing vessels and skin allow for multiple cannulations per tissue
- » Quick set up: tissues come pre-filled with fluid, red for the artery and blue for the vein
- » Arterial hand pump for a realistic arterial pulse

 FemoraLineMan
PART #: FLM-50
FemoraLineMan Replaceable Tissue
PART #: FLMT-50
Non-Sterile Guidewires (25-Pack)
PART #: NSG-10

 **Training Packages**
Learn more about our FemoraLineMan package savings by visiting our website.

SKILLS

- » Develop psychomotor skills required for obtaining visualization during cannulation
- » Visualize arterial pulse and venous compression
- » Identify the anatomical location of target vessel
- » Visualize needle cannulation, threading guidewire, and catheter placement
- » Practice femoral arterial puncture, catheter insertion or blind/landmark techniques



Lumbar Epidural Trainer

ULTRASOUND GUIDED EPIDURAL INSERTION AND FULL CATHETERIZATION



Safely master critical techniques for spinal epidural insertion and catheterization with Simulab's easy-to-use, ultrasound-guided **Lumbar Epidural Trainer**. Our true-to-life simulator sits upright or in a lateral decubitus position and features the lumbar vertebrae, iliac crest, spinous process, ligamentum flavum, epidural space, and dura. The trainer is available with three varieties of lifelike, ultrasound compatible replaceable tissues that mirror significant anatomical differences found in obese, geriatric, and normal patient populations. Every tissue allows users to experience variances in disc thickness and soft tissue depth on top of the vertebrae.

PRODUCT HIGHLIGHTS

- » Replaceable tissue variations allow for progressive skill development of diverse patient populations
- » Highly durable replaceable tissue for repeated procedures
- » Most realistic tactile feedback on the market

SKILLS

- » Use ultrasound and palpation to identify landmarks
- » Practice spinal and epidural injections from insertion to full catheterization
- » Experience the presence and absence of resistance, and tapping the plunger until loss of resistance is present
- » Ability to measure and insert the catheter to the appropriate depth; remove the needle and secure
- » Practice the procedure in the left lateral decubitus or sitting position

Lumbar Epidural Trainer

COMPONENTS INCLUDE

- 1 Lumbar Epidural Trainer
- 1 Normal Adult Replaceable Tissue
- 2 IV Bags with IV Pole (IVB-20)
- 1 Luer Lock Syringe
- 1 Fill Line
- 1 Red Concentrate

Lumbar Epidural Trainer
PART #: LE-30

Lumbar Epidural Trainer Replaceable Tissues

NORMAL ADULT REPLACEABLE TISSUE
PART #: LENT-30

GERIATRIC ADULT REPLACEABLE TISSUE
PART #: LEGT-30

OBESE ADULT REPLACEABLE TISSUE
PART #: LEOT-30

Regional Anesthesia Trainer

REALISTIC ANATOMY WITH REAL-TIME SYSTEM FEEDBACK



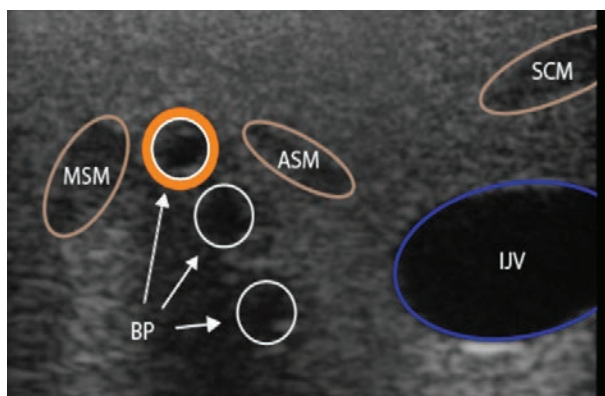
The **Regional Anesthesia Trainer with SmartTissue™** is the only nerve block training solution that provides a feedback mechanism to gain procedural accuracy and enhance the training experience during interscalene and supraclavicular nerve block skill development. The trainer allows ultrasound practice with visualization of clinically relevant brachial plexus anatomy and needle tip to ensure proper manipulation, placement and proximity to the nerves. The trainer is embedded with SmartTissue technology enabling it to connect with any PC to provide needle-to-nerve visuals and alarm feedback for of proper in technique.

PRODUCT HIGHLIGHTS

- » Ultrasound guidance for accurate needle insertion
- » Anatomically correct torso with landmarks for enhanced realism
- » Distinct, realistic “pop” if needle tip enters neural sheath
- » Software shows amber when in contact and red when penetrating the nerve. Optional proximity alarm also sounds for additional training cues
- » Optional articulating head increases realism

SKILLS

- » Psychomotor skills associated with targeting the nerves of the brachial plexus
- » Needle insertion using Interscalene and/or Supraclavicular approaches
- » Visualize needle tip positioning, proximity and placement verification
- » Recognition of nerve bundles, arteries, and veins



Regional Anesthesia Trainer with SmartTissue
w/o Articulating Head
PART #: ISBS-30

Regional Anesthesia Trainer with SmartTissue
with Articulating Head
PART #: ISBS-31

Regional Anesthesia with SmartTissue/
Vascular Access Training Package includes
ISBS-30 with CentralLineMan Replaceable
Tissue (CLMT-50) and Articulating Head
PART #: RAVAI-31

Regional Anesthesia Femoral Trainer

SMARTISSUE PROVIDES VISUAL AND AUDIO PROCEDURAL VERIFICATION



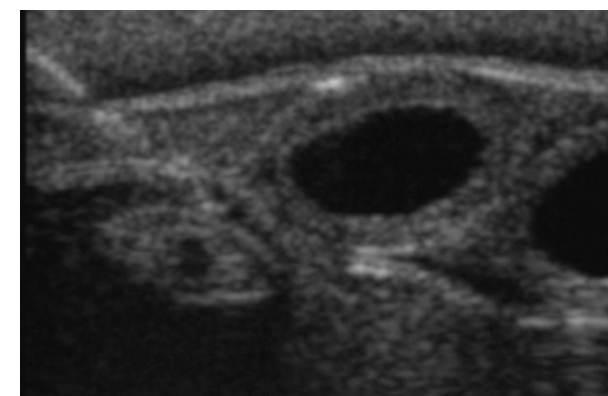
The **Regional Anesthesia Femoral Trainer with SmartTissue™** allows ultrasound practice with visualization of the most clinically relevant femoral anatomy and needle tip to ensure proper manipulation, placement and proximity to the nerves. The system includes a body form and replaceable tissue, each embedded with SmartTissue technology, allowing the system to connect with any PC to provide needle-to-nerve visuals and audio verification of improper technique.

PRODUCT HIGHLIGHTS

- » Ultrasound compatible for guidance during needle insertion
- » Anatomically correct lower torso with landmarks for placing femoral blocks
- » Distinct realistic “pop” is visualized and palpated when the needle passes through the fascia layers
- » Software shows amber when in contact and red when penetrating the nerve

SKILLS

- » Psychomotor skills associated with targeting femoral nerves for regional anesthesia nerve blocks
- » Needle insertion using femoral approach
- » Can be injected with simulated anesthesia, which is naturally expelled for repeated use
- » Transducer and needle manipulation and movement
- » Visualize needle tip positioning, proximity and placement verification
- » Recognition of nerves, arteries, veins and fascia layer anatomy



Regional Anesthesia Femoral Trainer with
SmartTissue
PART #: FNBS-10

Regional Anesthesia/Vascular Access
Femoral Training Package, includes
FNBS-10 and FemoraLineMan Replaceable
Tissue (FLMT-50)
PART #: RAVAF-10

Venipuncture Pads

Our ultrasound-compatible **Venipuncture Pads** are perfect for practicing venipuncture or peripheral catheterization on varying sized fluid filled veins. Three veins in the pads are slightly visible and palpable through the skin on one side and obscured by a thicker tissue layer on the other side, simulating patients with varying BMI and providing hand-eye coordination and tactile experience that easily transfers to patient care.

PRODUCT HIGHLIGHTS

- » Ultrasound compatible
- » Three different sized veins in a two-sided pad
- » Durable, self-sealing tissue
- » Easily refill veins for multiple uses

SKILLS

- » Obtaining intravenous access
- » Withdrawing fluids
- » Inserting a catheter into a peripheral vein
- » Using ultrasound guidance



Large Venipuncture Pad (4"x8"x1")

PART #: LVP-10

Deep Vessel Venipuncture Pad (4"x8"x2")

PART #: DVP-10

Pediatric Venipuncture Pad

PART #: PVP-10

Venipuncture Pads with Nerves

Our ultrasound-compatible **Venipuncture Pads with Nerves** are perfect for nerve identification. Practice manipulating the needle tip around various anatomically correct structures until the nerve is located and penetrated.

PRODUCT HIGHLIGHTS

- » Three simulated vessels and nerves
- » Vessels and nerves can be accessed using ultrasound guidance
- » Highly durable for repeated use

SKILLS

- » Nerve identification
- » Acquire and target solitary nerve via ultrasound
- » Simulated anesthetics can be injected to verify needle tip location and practice the entire regional anesthesia procedure
- » Vascular access can be practiced with positive flashback and cannulation



Large Venipuncture Pad with Nerves (4"x8"x1")

PART #: LVNP-10

Deep Vessel Venipuncture Pad with Nerves (4"x8"x2")

PART #: DVP-10

Venipuncture Tissue Holder

PART #: VTH-10



Vessel Depth

Standard Pad is 7.65 mm on the shallow side and 17.75 mm on the deep side.

Deep Vessel Pad ranges from 17.75 - 20.3 mm on the shallow side and 22.85 - 25.4 mm on the deep side.



TraumaChild® System

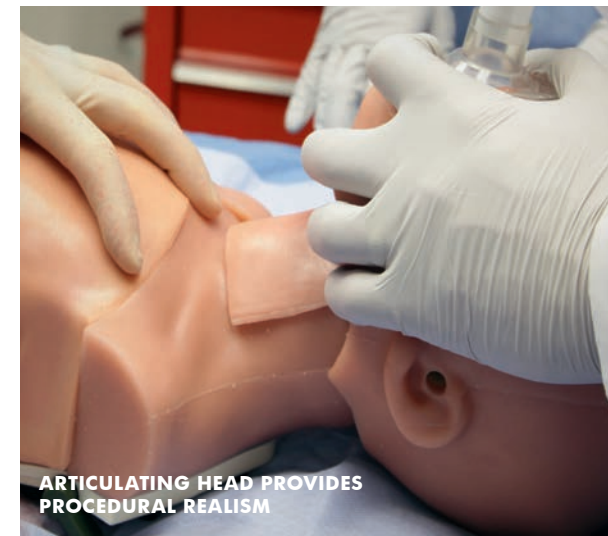
ADVANCED PEDIATRIC EMERGENCY LIFE SUPPORT



TraumaChild®, our high-fidelity soft tissue simulator was created in the likeness of TraumaMan, the world's most widely used surgical simulator. Simulab leveraged 25 years of global experience, customer feedback, and manufacturing advancements to bring TraumaChild to life. This simulated five-year-old breathes, bleeds and includes tissues that are easily replaceable—giving each student a first cut experience in a safe, simulated learning environment. It is designed to teach advanced trauma surgical skills for Pediatric Advanced Life Support (PALS).

PRODUCT HIGHLIGHTS

- » Realistic, anatomically correct five-year-old body form with articulating head
- » Flexible design so instructors can train in the ABC order or teach a single procedure
- » Quickly sets up in any facility – from a training room, to a hotel or out in the field.
- » Replaceable tissues bleed when cut, enhancing realism
- » Airway system powered by internal ventilator; providing an airway response to the trachea, lungs & thoracic cavity
- » Anatomically correct tissues are easy to replace and offer each student a first cut experience
- » Designed with the course coordinator in mind with simplified cleaning and maintenance of replaceable parts
- » 12-volt battery available for tetherless training



ARTICULATING HEAD PROVIDES PROCEDURAL REALISM



INTERNAL VENTILATOR PROVIDES AIRWAY RESPONSE



SKILLS

- » Surgical Cricothyroidotomy
- » Needle Cricothyroidotomy
- » Percutaneous Tracheostomy
- » Needle Decompression
- » Pericardiocentesis
- » Chest Tube Insertion
- » Diagnostic Peritoneal Lavage

**New
Optional
Battery**

Training Packages

Learn more about our TraumaChild package savings by visiting our website.



TraumaChild System
PART #: TC-2180
TraumaChild Abdominal Tissue Pack
PART #: TC-AB
TraumaChild Chest Tissue Pack
PART #: TC-CH
TraumaChild Neck Tissue Pack
PART #: TC-NK

VascularAccessChild™

THE ONLY PROCEDURAL TRAINER FOR PEDIATRIC CENTRAL LINE INSERTION



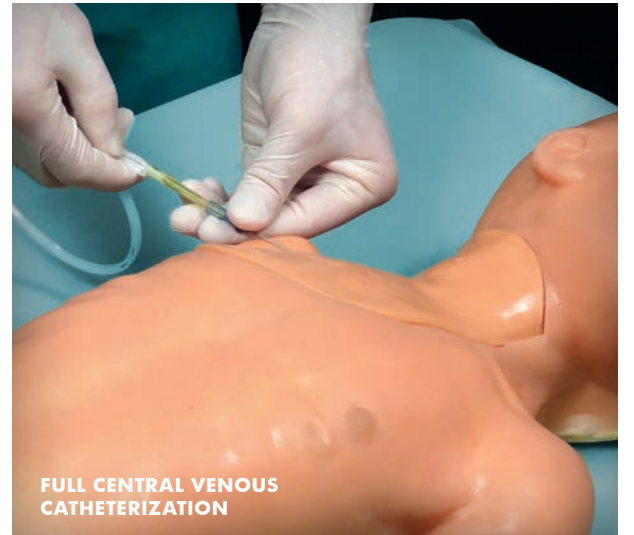
VascularAccessChild™ is the only high-fidelity soft tissue simulator designed to train pediatric central line placement. The trainer offers an effective ultrasound-guided solution for central venous access on a simulated five-year-old child that includes three access sites, replaceable tissues, and ultrasound compatibility during catheter placement.

PRODUCT HIGHLIGHTS

- » Anatomically correct, ultrasound compatible, with all relevant landmarks and vascular anatomy needed for catheter insertion
- » Exceptional ultrasound imaging
- » Two colors of simulated blood differentiate arterial and venous vessels and provide immediate feedback of unsuccessful cannulation

SKILLS

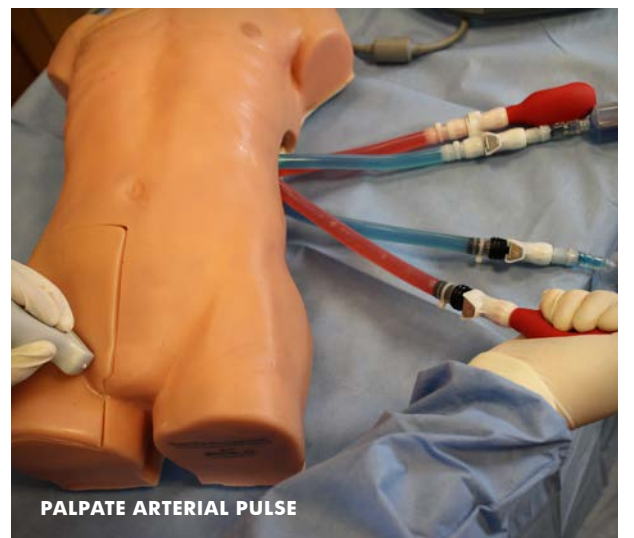
- » Practice full central venous catheterization using ultrasound-guided or blind/landmark insertion approaches at the internal jugular, subclavian, and femoral access sites
- » Develop psychomotor skills required for obtaining visualization during cannulation on pediatric patients
- » Visualize arterial pulse and venous compression
- » Visualize needle cannulation, guidewire threading, and catheter placement



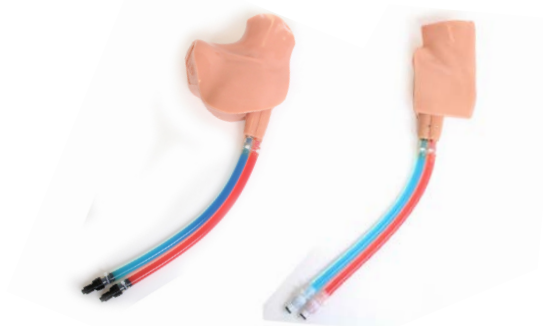
FULL CENTRAL VENOUS CATHETERIZATION



SELF-SEALING, DURABLE TISSUE FOR MULTIPLE USES



PALPATE ARTERIAL PULSE



Training Packages

Learn more about our VascularAccessChild package savings by visiting our website.



VascularAccessChild
PART #: VAC-30

VascularAccessChild Replaceable Neck Tissue
PART #: VACN-30

VascularAccessChild Replaceable Femoral Tissue
PART #: VACF-30

Pediatric Non-Sterile Guidewires (25 Pack)
PART #: NSGP-10

LumbarPunctureBaby™

REALISTIC ARTICULATING TWO-WEEK-OLD INFANT



The **LumbarPunctureBaby™** Trainer simulates a two-week-old infant that can be positioned either lateral or decubitus for ultrasound or blind technique lumbar puncture training. The anatomically correct body form includes an iliac crest and umbilicus. The replaceable tissue has L3 – L5 vertebrae with a sacrum and the gluteal fold. The tissue also includes spinal cord filled with simulated CSF and the epidural venous plexus filled with simulated blood.

PRODUCT HIGHLIGHTS

- » Anatomically correct two-week-old infant with flexible body form, ultrasound compatible
- » Visible and palpable landmarks include umbilicus, gluteal fold, iliac crest and vertebrae
- » The simulator can be positioned and flexed in the lateral decubitus or sitting position

SKILLS

- » Flexible body form provides realism when flexing the infant - simulating moving the interspinous process from a neutral to open position
- » Accurate needle placement for positive response and collection of simulated cerebrospinal fluid
- » Simulated epidural venous plexus and bony spinous process provides the user with feedback for improper needle placement
- » Insertion sites include L3-L4 and L4-L5



LumbarPunctureBaby Trainer

PART #: LPB-40

LumbarPunctureBaby Replaceable Tissue

PART #: LPBT-40

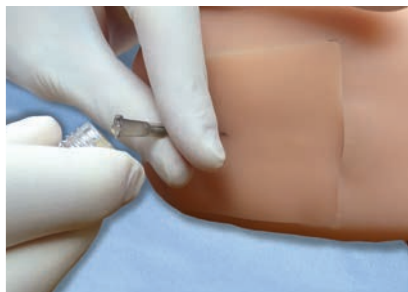
Training Packages

New Adult and Pediatric Lumbar Puncture Training Packages available. Ask us to learn more!

NEW



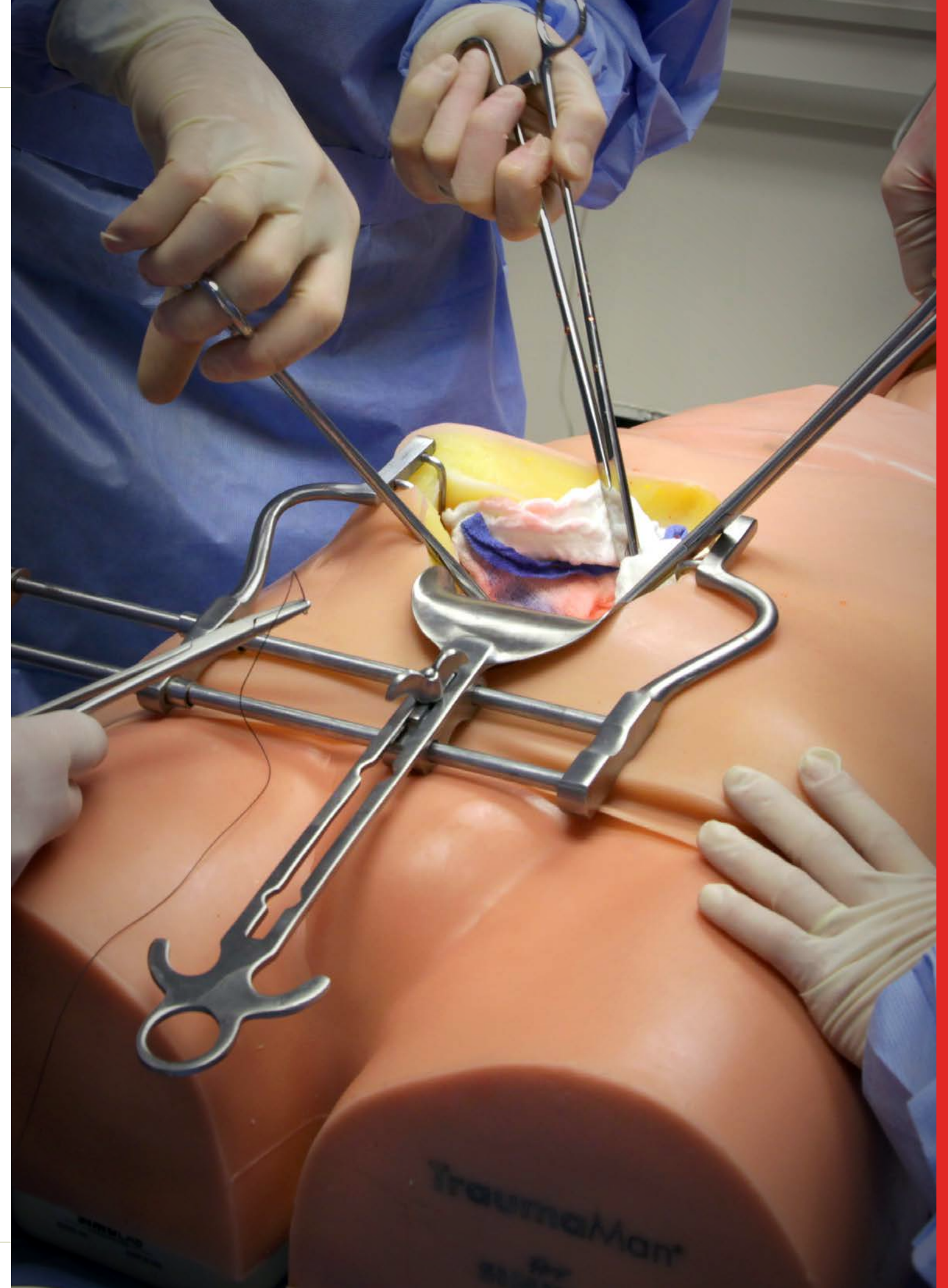
SIMULATED
ARTICULATING SPINE



COLLECT SIMULATED
CEREBROSPINAL FLUID

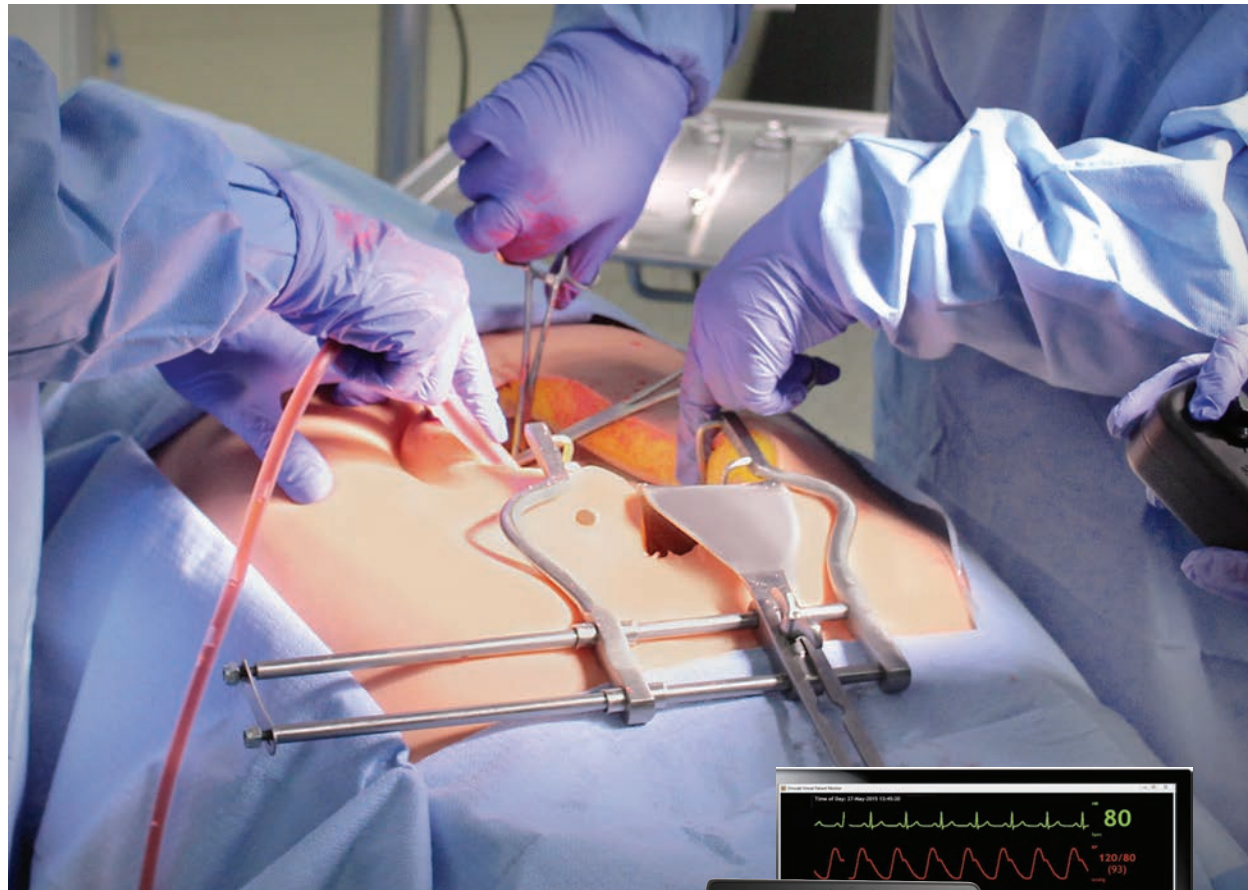


INCLUDES EPIDURAL VENOUS
PLEXUS WITH BLOOD RESPONSE



Surgical Abdomen Training System

ADVANCED TRAINING - COMBINE WITH TRAUMAMAN OR STAND-ALONE OPTIONS



The **Surgical Abdomen Training Platform** is a flexible solution in the growing area of team training and can be added to any simulation setting. Full surgical teams can work on improving technical, task-related skills, critical communication and teamwork during trauma scenarios. Simulab's Surgical Abdomen offers the opportunity to diagnose and treat renal or aortic injury, the management of emergency surgery, preparation for a catastrophic surgical event. It also builds reliability and confidence in an individual role within a team framework.

The system is powered by Simulab's **improved blood circulation system** so students can assess and control blood loss with suction and easy-to-use remote control. System can be battery operated for tetherless training.



VIRTUAL PATIENT MONITOR



MANAGE BLOOD FLOW AND SUCTION CONTROL

FEATURES

- » Anatomically correct human abdominal cavity including vertebral column, kidneys, intestines, complete digestive tract, renal artery and aorta
- » Adjustable blood flow to the operative site
- » Large, replaceable abdominal tissue that can be reused for multiple scenarios
- » Includes multiple catastrophic event scenarios to increase team training opportunities

SKILLS

- » Interact and communicate through emergency protocols within a large team scenario
- » Diagnose and treat aortic or renal artery injuries, or a lacerated kidney
- » Manage blood flow
- » Locate wound site, manage and repair the bleeding organ

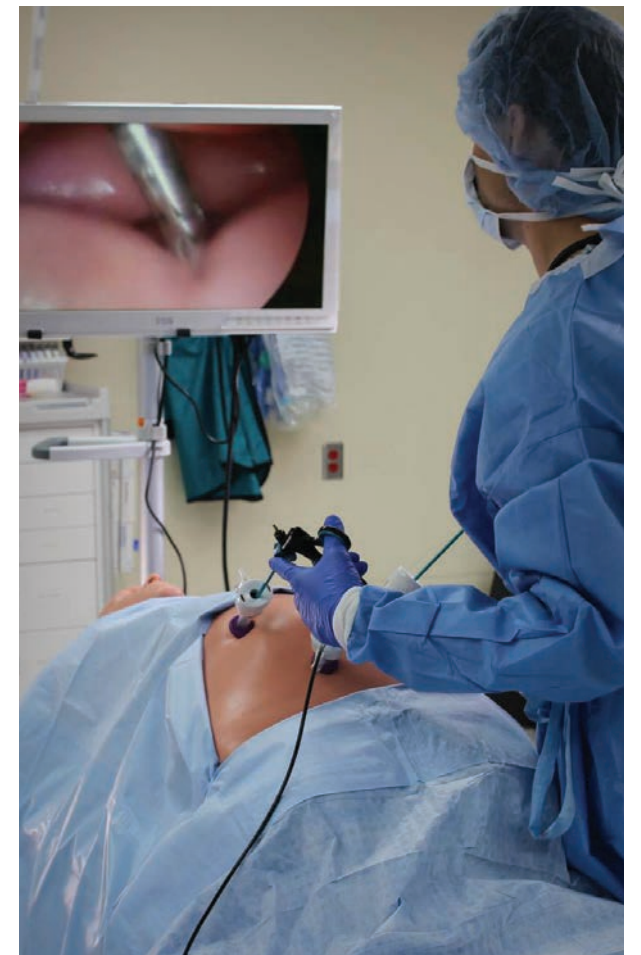
Choose the **Surgical Abdomen For TraumaMan** or our **Universal, Stand-Alone Platform**

TRAUMAMAN SURGICAL ABDOMEN

Transform your TraumaMan System's abdominal area into a blood pumping surgical site by choosing the Surgical Abdomen for TraumaMan, which integrates the platform into your existing system.

UNIVERSAL SURGICAL ABDOMEN

Surgical Abdomen is also available as a universal, stand-alone version. This flexible platform accommodates a wide range of simulation settings and easily integrates with the CentralLineMan System, our Regional Anesthesia Nerve Block simulator, or any upper body simulator.



SCENARIO OPTIONS



CHOLECYSTECTOMY

NICKED AORTA



NICKED RENAL ARTERY

LACERATED KIDNEY



TraumaMan® Surgical Abdomen Training System
PART #: SATP-1130

Universal Surgical Abdomen Training System
PART #: SATP-1230

Laparoscopic Trainers

BUILD BASIC TO ADVANCED SURGICAL SKILLS & PROCEDURAL KNOWLEDGE



Complete Digestive Tract PART #: SDT-10

Complete soft tissue digestive tract (15 feet) which can be used with the Surgical Abdomen Training Platform, Nissen Fundoplication Model (LNF-10), any abdominal trainer or separately



Laparoscopic Cholecystectomy Model PART #: LC-10

This procedural training module is designed for the dissection and removal of the gall bladder



Laparoscopic Nissen Fundoplication Model PART #: LNF-10

This procedural trainer is designed to fit inside any of Simulab's abdominal trainers for laparoscopic or open procedural training



Common Bile Duct Exploration Model PART #: LCD-10

This anatomically correct model is perfect for practicing laparoscopic transcystic common bile duct exploration

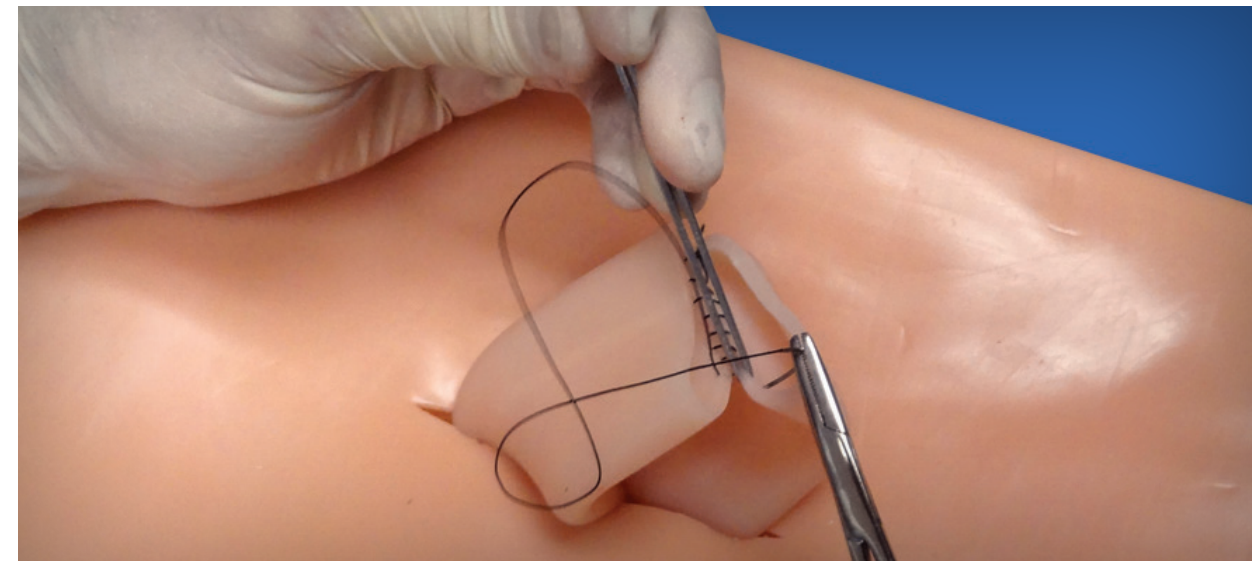


Flexible Training

Simulab's laparoscopic models are compatible with the Surgical Abdomen System and can also be used separately to build your own training scenario.

Laparotomy Trainer

SURGICAL INCISING, EXPLORATION, AND SUTURING



The **Laparotomy Model** simulates an open laparotomy procedure. This trainer includes a replaceable abdominal tissue cover that has skin, subcutaneous fat, fascia, preperitoneal fat, and peritoneum.

PRODUCT HIGHLIGHTS

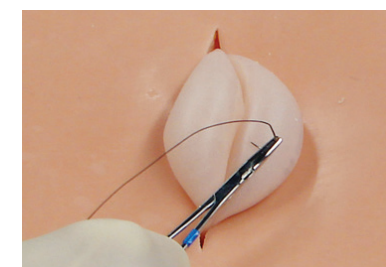
- » Lifelike tissue with includes skin, subcutaneous fat, fascia, preperitoneal fat, and peritoneum.
- » Simulator base designed for multiple uses with replaceable tissue and can be used for a variety of procedures
- » The base is watertight and can be filled with fluid
- » It also includes two clips for securing internal tissue structures like a simulated intestine.

SKILLS

- » Incision and closure of the midline abdominal region
- » Bowel anastomosis
- » Surgery in the abdominal region



Laparotomy Trainer
PART #: LPM-10
Laparotomy Replaceable Tissue
PART #: LPMT-10
Large Intestine
PART #: LGI-10



USED TO SIMULATE ANASTOMOSIS



ALLIGATOR CLIPS FOR SECURING
INTERNAL STRUCTURE



TISSUE LAYER

Basic Open Surgical Skills (BOSS)

FLEXIBLE PLATFORM FOR BASIC TO ADVANCED SUTURING



Basic Open Surgical Skills (BOSS) is a flexible platform for developing basic to advanced suturing skills and techniques. The platform combines tasks to develop instrument handling, suturing, injection, and knot tying techniques. It provides an easy to clean platform for synthetic or cadaveric task modules. The ergonomic design creates a realistic tool for improving skills. BOSS can be purchased at a discount in a variety of Package Options or as a Volume Package to build a 10-Student Surgical Skills Lab.

PRODUCT HIGHLIGHTS

- » Durable multi-use platform can be used with any combination of materials
- » Ergonomic design ensures correct hand positioning
- » Small, portable platform perfect for simulation lab or home use

SKILLS

- » Basic to advanced suturing
- » Suturing on a skin surface
- » Subcuticular suturing
- » Knot tying under tension and at depth
- » Administering injections
- » Instrument handling
- » Wound closure techniques
- » Bowel anastomosis

INCLUDED

SUTURING SKILL TRAINING VIDEO

Each BOSS System comes with a suturing and knot tying curriculum developed by **University of Washington educators**. It guides the student through a series of suturing and knot-tying training exercises that prepares them for testing. Also included is an **Assessment Metrics Sheet** to help students test themselves against clinical standards.

Training Packages

Simulab offers many training packages for the Basic Open Surgical Skills (BOSS) Trainer that offer value and can be built to suit your program needs. Contact us or visit our website to learn more.

Suturing Tissues

FLEXIBLE PLATFORM FOR BASIC TO ADVANCED SUTURING

Tissue Suture Pad PART #: TSP-10

Practice suturing skills with lifelike tissue structure molded in various shapes and sizes



Directional Suture Pad PART #: DSP-10

Work on needle-entry skills from all directions with our life-like tissue structure molded in two tissue plane variations



Standard Tissue Pad PART #: TSM-10

Tissue layers include skin and subcutaneous fat. It is excellent for incising and suturing



Complex Tissue Pad PART #: TSC-10

Tissue layers include skin, subcutaneous fat, fascia and pre-peritoneal fat. It is an excellent simulation for multilayer dissecting and suturing



Tissue Suture Pad Package PART #: TSPP-10

Our best-selling Tissue Suture Pad lets you work with different tissue planes and depths; and the Directional Tissue Pad allows for needle practice in all directions



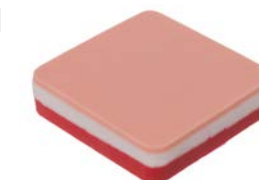
Subcuticular Suturing Pad PART #: SCS-10

Contains skin and subcutaneous fat. This pad is excellent for practicing subcuticular suturing



Subcutaneous Injection Pad PART #: SIP-10

The pad has multiple layers to represent skin, fat, and muscle to practice tissue injection techniques



Injectable Tissue Pad PART #: ITM-30

The Injectable Tissue Pad contains realistic skin and absorbent foam. It is an excellent simulation for practicing injections



Student Suturing Kit PART #: STK-10

The Student Suturing Kit includes a Tissue Suture Pad, a Subcuticular Suturing Model, a Complex Tissue Model, a Suturing Instrument Kit, an Instructional video and a Self Assessment Metrics Sheet



SimuGear

Additional accessories for enhanced suturing training available on our SimuGear page.

LapTrainer with SimuVision®

SIMULATED LAPAROSCOPIC VIDEO TRAINER FOR APDS AND FLS SURGICAL SKILLS



The **LapTrainer with SimuVision®** includes a highly portable, innovative laparoscopic video trainer. SimuVision technology integrates into the trainer to create an affordable and portable platform for building laparoscopic surgical skills. Laparoscopic Skill Modules, available for the LapTrainer help students prepare for ACS/APDS Surgical Skills Curriculum for Residents, as well as for the FLS Curriculum. These skill sets build basic hand-eye coordination as well as sufficiency in tool handling and precision in various surgical techniques.



LapTrainer with SimuVision
PART #: LTS-40



Laptop and instruments
not included

PRODUCT HIGHLIGHTS

- » Portable and affordable
- » Similar look and feel of an actual laparoscope
- » Boom mounted, fully adjustable 1080p high definition camera with autofocus
- » Set up in less than five minutes on any PC
- » Record and store video files
- » FLS and APDS compatible

SKILLS

- » Develop laparoscopic surgical skills and dexterity
- » Improve eye-hand coordination
- » Practice transferring, dissection and suturing

Laparoscopic Skill Set Modules

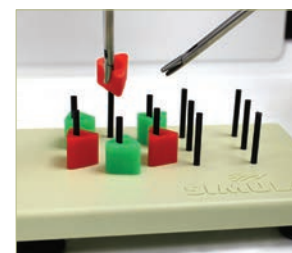
SIMULATED LAPAROSCOPIC VIDEO TRAINER FOR APDS AND FLS SURGICAL SKILLS

Laparoscopic Skill Set Modules are available for the LapTrainer to help students prepare for FLS Curriculum and ACS/APDS Surgical Skills Curriculum for Residents. These skill sets build basic hand-eye coordination as well as proficiency in tool handling and precision in various surgical techniques.

LAPAROSCOPIC STUDENT SKILL SET

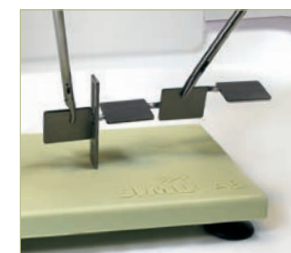
Part # SS1-10

Includes Peg Transfer Board, Key and Rope Trainer, Tissue Suture Pad, and Simulated Intestine skill task trainers.



PEG TRANSFER

Lift each disk, transfer it between hands, and place it on correct peg. Develops eye-hand coordination and ambidexterity.



KEY AND ROPE

Turn key or thread a rope through slot. Develops 3D to 2D orientation skills, ambidexterity, and unnatural wrist rotations.



TISSUE SUTURING

Practice suturing and knot tying in a wide variety of wounds. Develops skills required for needle transferring and placement of a suture.



SIMULATED INTESTINE

Suture a soft tissue model (Simulated Intestine included) held in place using suction clips. Develops advanced suturing and tissue skills.

APDS BASIC LAPAROSCOPIC SKILL SET

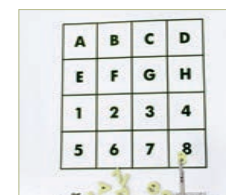
Part # SS2-10

Includes Bean Drop, Checkerboard, Block Move, Running String and Suture Foam skill task trainers.



BEAN DROP

Grasp beans and move them 15cm to place them in a 1-cm hole at the top of an elevated cup.



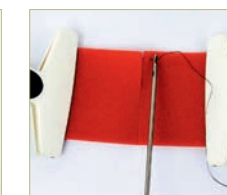
CHECKERBOARD

Arrange sixteen letters and numbers in the correct squares on the template.



BLOCK MOVE

Lift blocks using a curved needle fixed to a grasper. Move blocks 15cm and place in designated space.



SUTURE FOAM

Suture two foam squares together using a Grasper and Endostitch.



RUNNING STRING

Grasp a string only at the colored sections marked at 12-cm intervals. Skill mimics running bowel.



Training Packages

Learn more about our Laparoscopic Skill Set Training Modules and package savings by contacting Simulab or visiting our website.

Perineal Repair Trainer

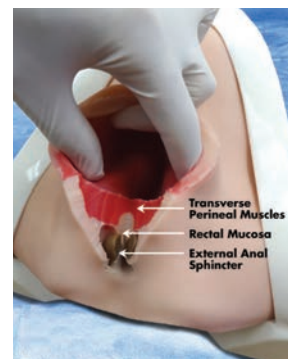
ANATOMICAL AND PROCEDURAL TRAINING OF 1ST TO 4TH DEGREE PERINEAL REPAIR



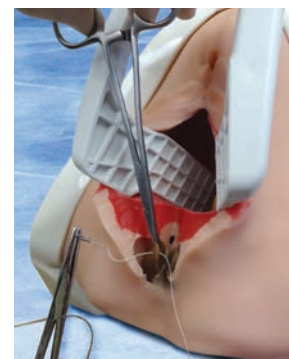
The **Perineal Repair Trainer** is the only soft tissue model for anatomical and procedural training of first to fourth degree perineal tears. The trainer includes vaginal and anal canals, rectovaginal fascia, skin and muscle layers, a retractable rectal sphincter and rectal mucosa; and allows for midline, mediolateral, and lateral incisions.

PRODUCT HIGHLIGHTS

- » The replaceable tissue allows for multiple cuts and realistic suturing of the vaginal mucosa, muscle and subcutaneous layers
- » The tray overlays the tissue providing tension that enhances the simulation and creates a bony anatomical landmark simulating the ischial spine that allows the user to perform a pudendal block
- » The internal distension rod provides more realistic access to deeper tissues during 3rd and 4th degree repairs



INCLUDES ALL CLINICALLY RELEVANT LANDMARKS



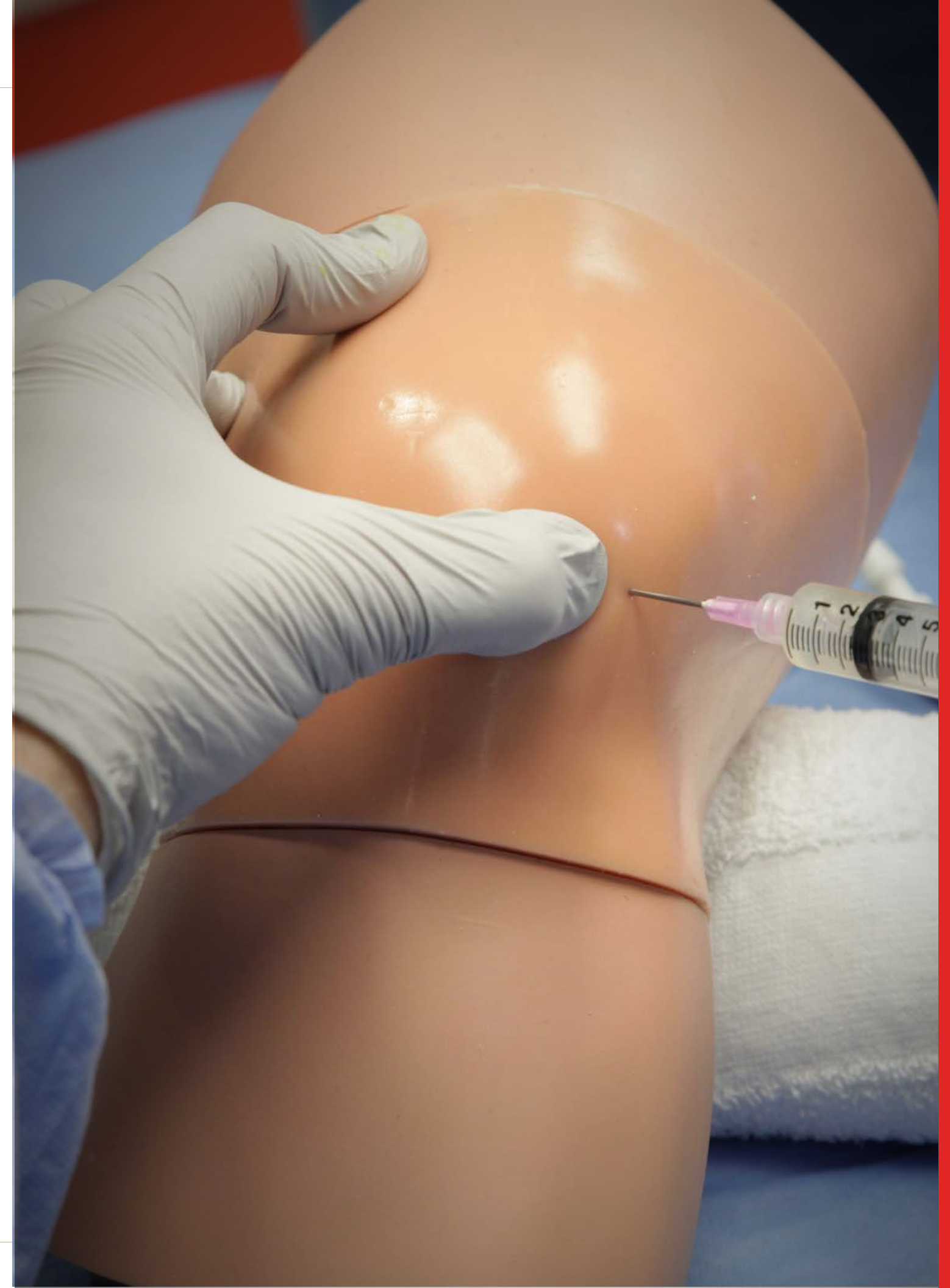
PRACTICE 1ST THROUGH 4TH DEGREE REPAIRS

SKILLS

- » Midline, mediolateral and lateral incisions
- » Replaceable tissue allows for multiple incision site and suturing
- » Most realistic tissue properties for 4th degree repair - retractable sphincter and rectal mucosa



Perineal Repair Trainer
PART #: PRT-20
Perineal Repair Replaceable Tissue
PART #: PRTT-20



Lumbar Puncture Trainer

UNSURPASSED VALUE WITH CLINICALLY RELEVANT ANATOMY



Safely master critical techniques for lumbar puncture insertion with Simulab's easy-to-use, ultrasound-guided **Lumbar Puncture Trainer**. Our true-to-life simulator sits upright or in a lateral decubitus position and features the lumbar vertebrae, iliac crest, spinous process, ligamentum flavum, and epidural space; with a fluid-filled compartment for simulated cerebrospinal fluid. The trainer is available with three varieties of lifelike, ultrasound compatible replaceable tissues that mirror significant anatomical differences found in obese, geriatric, and normal patient populations. Every tissue allows users to experience variances in disc thickness and soft tissue depth on top of the vertebrae.

PRODUCT HIGHLIGHTS

- » Self-healing replaceable tissue is highly durable for repeated procedures
- » Replaceable tissue variations allow for progressive skill development of diverse patient populations
- » Durable and replaceable tissue
- » Most realistic tactile feedback on the market

SKILLS

- » Use ultrasound or palpation to identify key landmarks
- » Experience lifelike needle resistance, including pops when needle transverses ligamentum flavum and dura
- » Allows students to collect CSF
- » Practice the procedure in the left lateral decubitus or sitting position



Lumbar Puncture Trainer

COMPONENTS INCLUDE

- 1 Lumbar Puncture Trainer
 - 1 Normal Adult Replaceable Tissue
 - 2 IV Bags with IV Pole (IVB-20)
- Lumbar Puncture Trainer
PART #: LP-30

Training Packages

New Adult and Pediatric Lumbar Puncture Training Packages available. Ask us to learn more!

NEW

Lumbar Puncture Trainer Replaceable Tissues

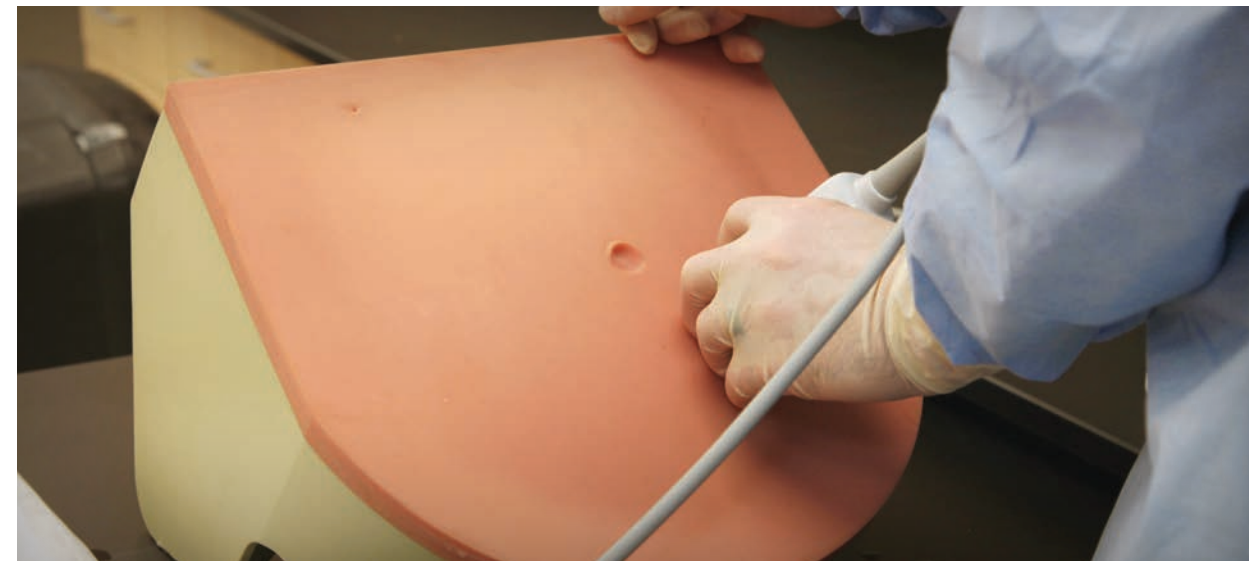
NORMAL ADULT REPLACEABLE TISSUE
PART #: LPNT-30

GERIATRIC ADULT REPLACEABLE TISSUE
PART #: LPGT-30

OBESE ADULT REPLACEABLE TISSUE
PART #: LPOT-30

Ultrasound Paracentesis Trainer

DIAGNOSTIC AND THERAPEUTIC ABDOMINAL PARACENTESIS



Our realistic, yet durable **Ultrasound Paracentesis Trainer** allows users to gain procedural accuracy as they practice performing paracentesis with or without ultrasound. Positioned to simulate a patient sitting up at a 45-degree angle with a distended abdomen the realistic internal anatomy includes the pubis symphysis and iliac crest. Perform a diagnostic procedure with a small amount of fluid removed or shift to a therapeutic approach to mimic the removal of more fluid to reduce intra-abdominal pressure and relieve other associated symptoms.

PRODUCT HIGHLIGHTS

- » Ultrasound compatible with replaceable tissue
- » Additional anatomy includes superficial epigastric vessels, partial liver, partial spleen, rectus abdominis muscles, mesentery and intestines
- » Anatomical landmarks include the umbilicus, pubis symphysis, and anterior superior iliac spine
- » Remove up to one liter of intraperitoneal fluid

SKILLS

- » Drain fluid from the peritoneal cavity
- » Locate pocket of ascites
- » Gauge the distance from skin to fluid, and avoid bowel
- » Look for blood vessels beneath the skin using a vascular probe



Paracentesis Trainer

PART #: PAC-20

Paracentesis Replaceable Tissue

PART #: PACT-20



ULTRASOUND COMPATIBLE TISSUE



REALISTIC INTERNAL ANATOMY



ANATOMICALLY CORRECT LANDMARKS

Ultrasound Thoracentesis Trainer

ADJUSTABLE SIZE OF PLEURA EFFUSION



The **Ultrasound Thoracentesis Trainer** simulates the left side of the torso with anatomical landmarks including the scapula, ribs, diaphragm, pleural cavity, and lung. The simulated lung can be visualized as an echogenic structure with an inflation mechanism to adjust the size of the pleural effusion. Positive fluid flow offers users feedback when pleural effusions are accurately accessed.

PRODUCT HIGHLIGHTS

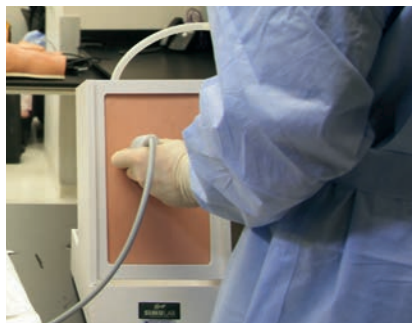
- » Using ultrasound to identify fluid location
- » Anatomically correct with proper landmarks
- » Model base designed for multiple uses with replaceable tissue
- » Self-sealing for multiple procedures
- » Simulated lung can be visualized as an echogenic structure with an inflation mechanism to adjust the size of the pleural effusion

SKILLS

- » Removal of fluid from the pleural cavity
- » Understanding pleural effusions



Ultrasound Thoracentesis Trainer
PART #: THM-30
Ultrasound Thoracentesis Replaceable Tissue
PART #: THMT-30



ULTRASOUND COMPATIBLE TISSUE



EXTREMELY DURABLE TISSUE FOR REPEATED USE



OPEN TOP ALLOWS CATHETER DEPTH VISUALIZATION

Ultrasound Arthrocentesis Trainer

JOINT ASPIRATION AND INJECTION



Practice diagnosis and management of knee effusion with Simulab's **Ultrasound Arthrocentesis Trainer**. This anatomically correct trainer represents an extended left leg with ultrasound compatible areas, including the patella, patellar ligament, tibia, fibula, femur, synovial sac, and synovial fluid. Synovial fluid can be aspirated from a joint cavity using the medial or lateral approach. The insertion sites include suprapatellar and parapatellar.

PRODUCT HIGHLIGHTS

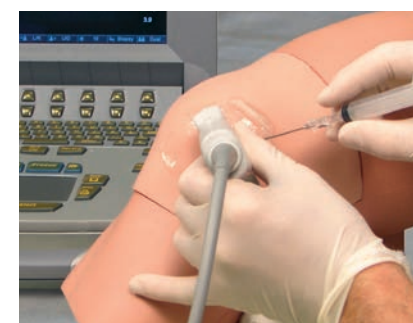
- » Ultrasound-compatible, replaceable tissue is refillable and durable for multiple uses
- » Realistic, tactile feedback
- » Bony contact sensation when the needle hits patella or femur
- » Fluid can be left clear or colored
- » Ability to milk the suprapatellar pouch
- » Ability to increase or decrease the size of effusion

SKILLS

- » Medial and lateral approach
- » Suprapatellar and parapatellar insertion sites
- » Palpating significant anatomic landmarks



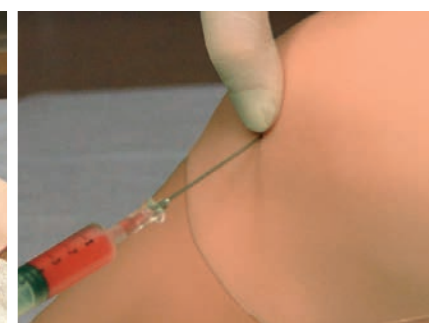
Ultrasound Arthrocentesis Trainer
PART #: ARC-20
Ultrasound Arthrocentesis Replaceable Trainer
PART #: ARCT-20



ULTRASOUND COMPATIBLE TISSUE



MEDIAL AND LATERAL APPROACHES



ADD COLOR TO FLUID

TraumaMan Instrument Kit PART #: TIK-10

This kit is complete with all necessary instruments for all TraumaMan procedures. It includes needles, syringes, clamps, forceps, retractors, needle holders, hemostats, scalpels, sutures, needle catheters, guidewires, an endotracheal tube, and more.



Surgical Abdomen Instrument Kit PART #: SAIK-10

This kit includes the instruments for use with the Surgical Abdomen. It includes a Balfour Abdominal Retractor, clamps, forceps, needle holders and more.



Suturing Instrument Kit PART #: SIK-10

This kit is for suturing training and includes a scalpel, hemostat, forceps, scissors and sutures.



TraumaChild System Add-On Instrument Kit PART #: TAK-10

When added to the TraumaMan Instrument Kit (TIK-10) the user will have the necessary instruments for all TraumaChild procedures.



Non-Sterile Guidewires (25 Pack) PART #: NSG-10

Pediatric Non-Sterile Guidewires (25 Pack) PART #: NSGP-10

Non-Sterile Guidewires PICC Line (25 Pack) PART #: NSG-20



Simulated Venous Blood PART #: MV-16

Simulated venous blood, 16-ounces for use with our vascular access and regional anesthesia trainers.



Simulated Arterial Blood PART #: MA-16

Simulated arterial blood, 16-ounces for use with our vascular access and regional anesthesia trainers.



Red Concentrate for Simulated Fluids PART #: TMP-1017

For use in TraumaMan and TraumaChild tissues only.



Red Concentrate for Arterial Blood PART #: MAC-4



SimuSensor Venous Fluid Concentrate PART #: SSV-16

Simulated Venous fluid for use with the PacerMan System.



Simulated IV Bag Package - Adult PART #: IVB-20

Simulated IV Bag Package - Pediatric PART #: IVB-10



Replaceable IV Bags - Adult (2 Pack) PART #: IVB-22

Replaceable IV Bags - Pediatric (2 Pack) PART #: IVB-12



Hand Pump (Red Bulb) PART #: CLP-1008

This pulsatile Hand Pump comes prefilled with red fluid to create a simulated pulse visible under ultrasound and provides a strong landmark when palpated. Compatible with our vascular access and regional anesthesia trainers.



Venous Pressure Regulator PART #: CLP-1001

This syringe which comes prefilled with blue venous fluid can be used to adjust the system's blood pressure on our vascular access and regional anesthesia trainers.



Skin Conditioning Powder PART #: TMP-1018

The skin conditioning powder gives the skin on our simulators a more realistic feel.



System Battery Pack (2.6 Amps) PART #: PMP-1009

For a more realistic and immersive experience, let your next training be untethered. This Battery Pack is compatible with our PacerMan System, ArterialLine Trainers, and our Surgical Abdomen Training System.



Patient Positioning Tray PART #: PPT-10

Compatible with both the CentralLineMan System and the Regional Anesthesia Trainer and offers users the opportunity to practice the complete central line insertion and nerve block administration procedures from start to finish. Place the simulator in a 15° Trendelenberg position or 15° semi-lateral position for enhanced realism.



System Battery Pack (5.2 Amps) PART #: TMS-1023

For a more realistic and immersive experience, let your next training be untethered. This Battery Pack is compatible with our TraumaMan System.



Adjustable Tissue Tray PART #: ATT-10

The Adjustable Tissue Tray may be used as a stand-alone Surgical Skills Tray or is compatible with our BOSS Basic Open Surgical Skills Trainer. The ergonomic design promoted proper hand placement during suturing and allows users to adjust pressure at the site.



System Battery Charger PART #: TMS-1024

Charge your System Battery Pack with this Battery Charger. The charger provides a notification light that turns green when fully charged and is compatible with the PMP-1009 Battery Pack and the TMS-1023 Battery Pack.



Contoured Tissue Tray PART #: CTT-10

Any of our tissue models can be inserted into the Contoured Tension Tray to simulate the natural curve of an arm or leg, increasing the suturing difficulty.



Venipuncture Tissue Holder PART #: VTH-10

Our Tissue Holder features natural arm and leg curvature so the pads can be worn by any standardized patient or patient simulator.



Contact us today to learn more about how Simulab can provide your program with the best in medical simulation.

(206) 297-1260 | info@simulab.com
www.simulab.com

A message from Christopher Toly CHIEF EXECUTIVE OFFICER

This year, our 26th year as a company, we spent our time looking forward, asking ourselves, “What problems are we going to help solve over the next 25 years?”. To determine this, we focused on a core principle that has driven us since our formative years; listening and partnering with our customers. We are listening to you in defining your training needs and partnering with you to remove the barriers that, as educators, you have in making medical education more efficient and effective.



At Simulab, we are relentless innovators and are confident that we will continue to bring forward products and technologies that are “firsts” in our industry just as we have over the last 25 years. Thank you for partnering with us over the years, please continue to share your needs with us. I promise you we will keep delivering.

Let’s build the future together.

Sincerely,


Christopher Toly
CEO/CTO



Simulab is committed to replicating human anatomy and building realistic, easy-to-use training tools for medical education. By collaborating closely with leading educators, leveraging over 25 years of experience and continually pushing the bounds of realistic tissue discovery, Simulab has become the market leader in realistic and affordable solutions for a vast array of educational needs.

With in-house research and development efforts focused on anatomical realism and product innovation, Simulab has contributed significant advances to the field of simulation. The TraumaMan System is the world’s most widely used surgical simulator.

Simulab proudly serves those who have served in all branches of the United States Military, the VA and NIH. For ease of use for all our government customers, we maintain both GSA and ECAT Contracts.

Simulab builds custom solutions for medical device, pharmaceutical, and diagnostics manufacturers. Simulab can highlight the unique aspects of your product in the most convincing, durable and cost effective way.

Located in Seattle, Washington just minutes from the highly acclaimed University of Washington School of Medicine, Simulab has numerous United States and European patents.

All Simulab products are entirely latex-free.



13001 48th Avenue South
Seattle, WA 98168 | USA

T (206) 297-1260
(866) 400-1260

F (253) 681-7667

E info@simulab.com

simulab.com